

EXKLUSIV [®] WOHNKULTUR
der Extraklasse
Haus



Exklusiv Haus AG

Building the future with
energy saving homes



The ExklusivHaus

Exklusiv Haus AG in Bueren, NRW, Germany



Is passionately building high quality homes on a total area of 46,000 m² in a specially equipped 10,000 m² production plant.

This high-end product being shown for the first time is a unique combination of energy efficiency and comfortable living.

The complete construction is pre-manufactured in an indoor environment and is ready mounted at the building site within days.

Made in Germany!



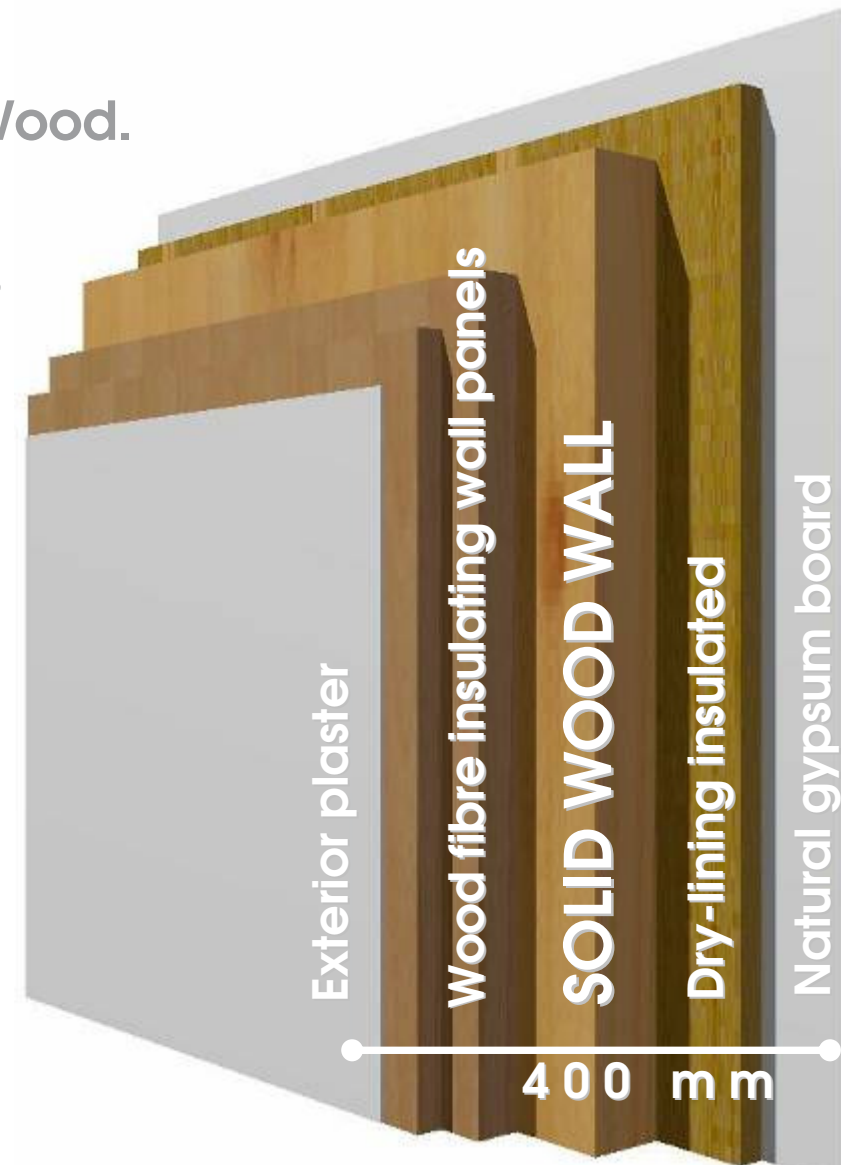
The ExklusivHaus

Quality - Made in Germany

Utilising one of nature's most natural products - Wood.

Building a solid future for you and your family. The **full wood-wall system** made by Exklusiv Haus ensures low heating costs. Special energy concepts exclude any kind of fossil fuel and come up with:

- Highly insulated and humidity transferring, 400 mm SWIB wall system with a heat transfer coefficient (htc) of $0.145 \text{ W/m}^2\text{K}$.
- High end, 3 layer noble gas window glass with an htc of $0.7 \text{ W/m}^2\text{K}$.



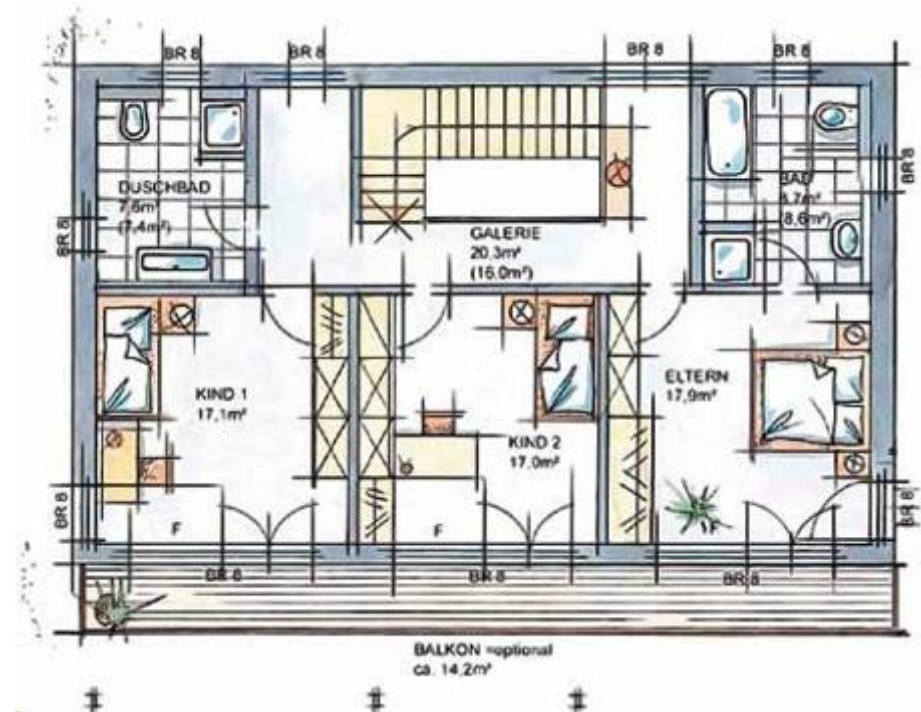


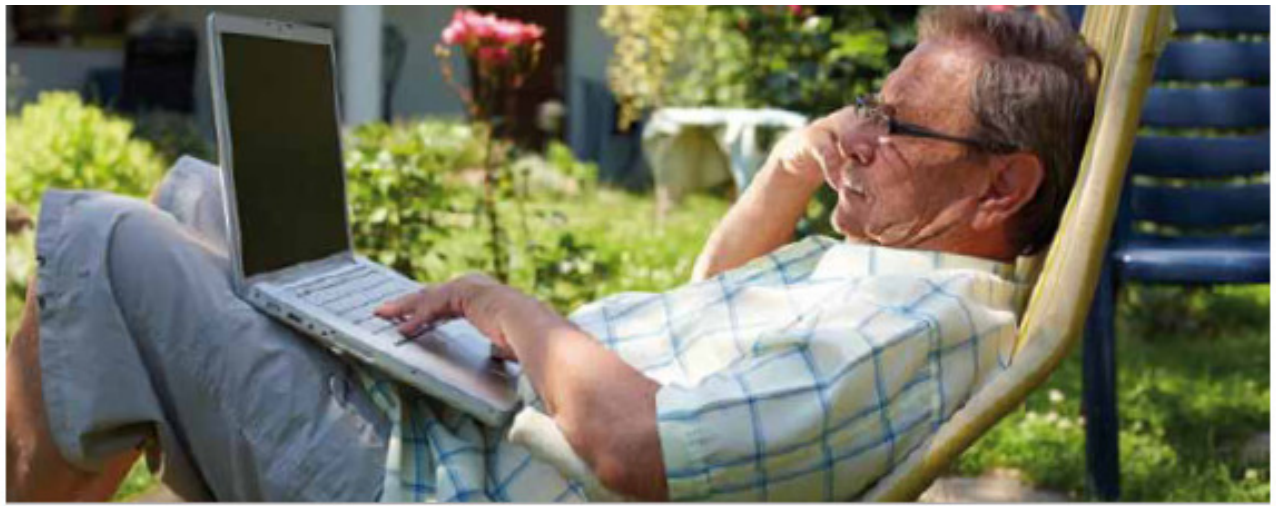


We consider a house to adapt to its owner, not the other way round. That is why this mansion represents functionality and cosiness, yet remains inviting and very private.

The interior design blends with the outside view - a unique living experience. Its roomy concept provides private areas for all occupants, as well as shared space for family and friends. Make yourself at home!

If you combine high end design art with modern techniques and German know how, the result is always something distinctive. In the tradition of Bauhaus style, fine design and maximum functionality blend together to create a luxurious living experience. Details like the remarkable balcony porch standing proudly on its slender columns, the slim simplistic clean lines, point to the luxurious and timeless elegance both inside and out!





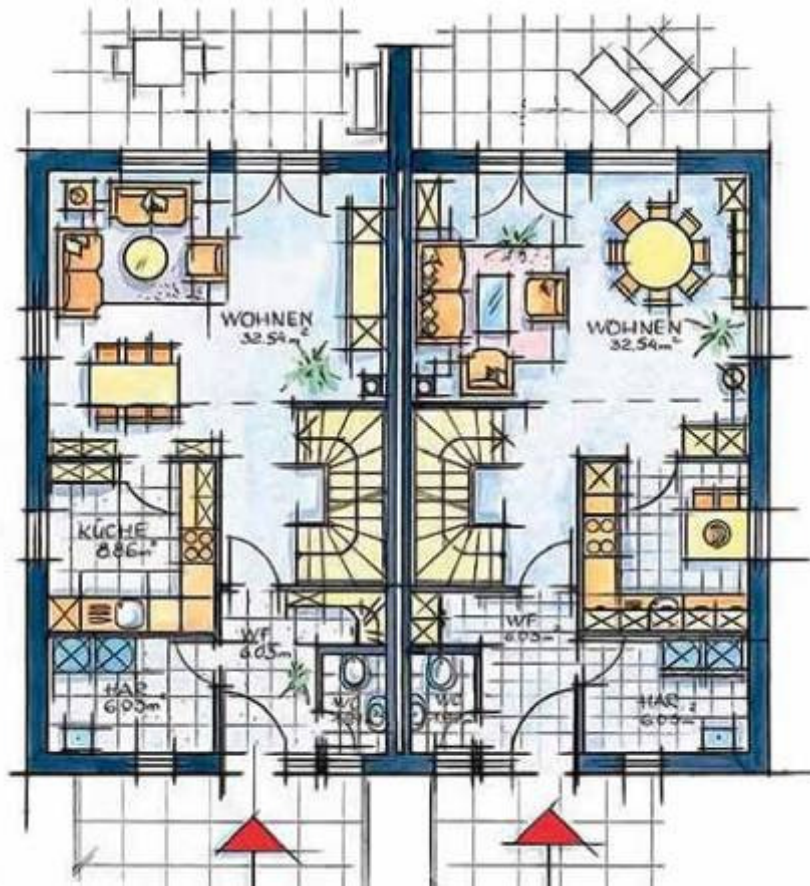
This outline is delightfully modern and ageless, clear decisive architecture hint at the sunny luxurious ambience waiting within!

The resting wing consisting of both bedrooms and bathrooms represents a haven of tranquillity in your daily life. Enjoy the luxury of this wellness area - You deserve it!

Large windows make your living and dining room an ocean of light. These areas are natural meeting points for you and your family and we are sure that you will love relaxing in these sunny places very much.



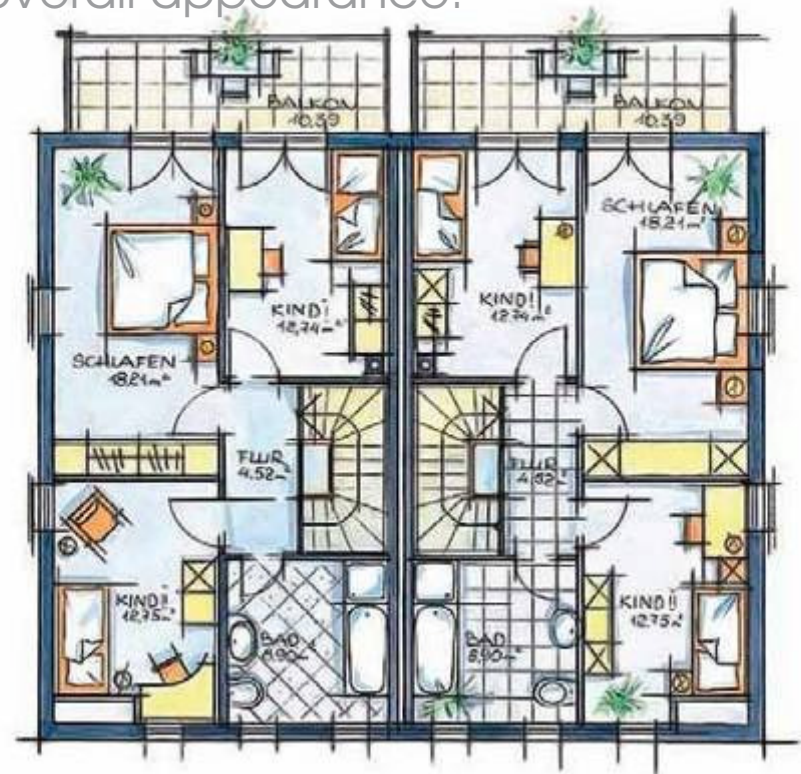




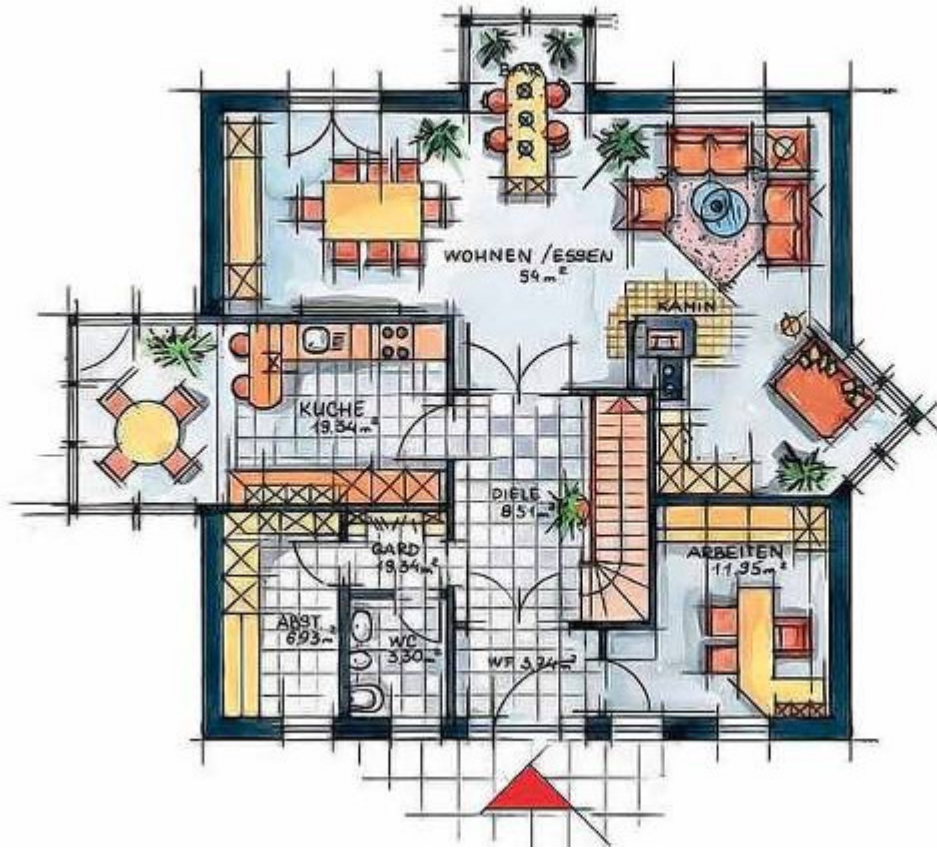
This layout is an assembly of modern architecture, combining outside appearance with intelligent internal space. The terrace area is sheltered by a large balcony and offers the ideal place to enjoy evenings outside with a good book, or long lasting conversations. The balcony which can be accessed by two sleeping rooms protects thoroughly against wind and rain, by utilising a large porch roof. The solid partition wall helps maintain your privacy.

The perfectly integrated sun shield keeps your bedrooms cooler and accentuates the straight overall appearance.

Semi-detached with a monopitch roof and large windows – what a great combination for real sun worshippers! You will find modern architecture as well as classic wooden elements all around you. Thanks to the energy saving monopitch roof every corner of your rooms will be bright.







A home bathed in light ensures your home life remains sunny! All requirements of a harmonious family life are fulfilled in this sophisticated house. Large glass elements and a successful combination of soothing colours white and grey, ensure a relaxing family environment.

The tasteful glass alcove with a barrel roof is responsible for a tremendous view of the garden. The open gallery transforms the living area into a real sun drenched oasis.

The first floor is perfectly planned as well. The areas for parents and children are located in separate wings. The perfect solution combining privacy with access!





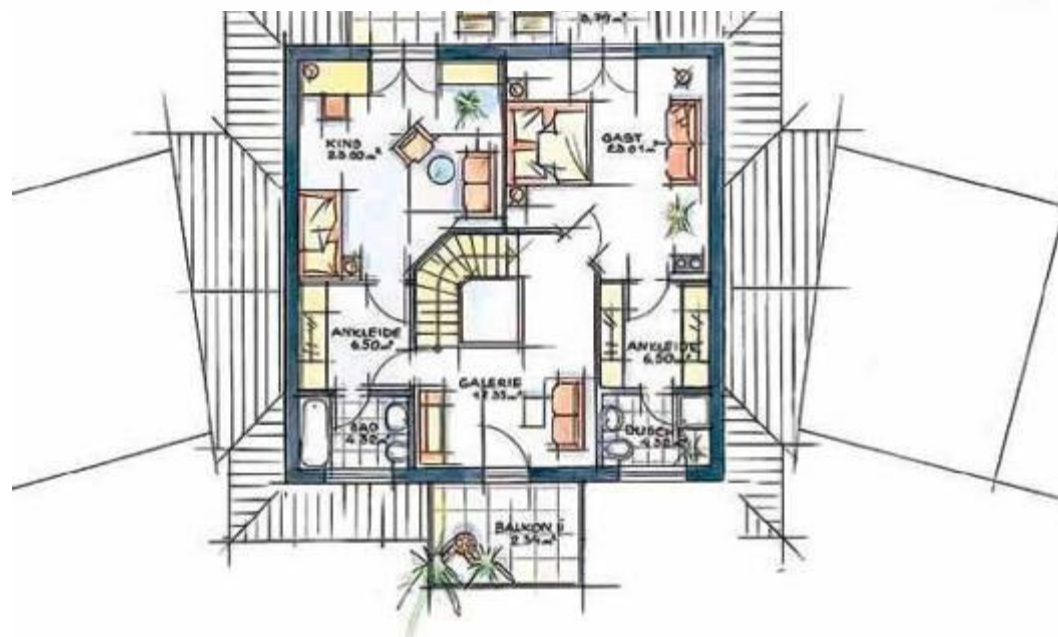
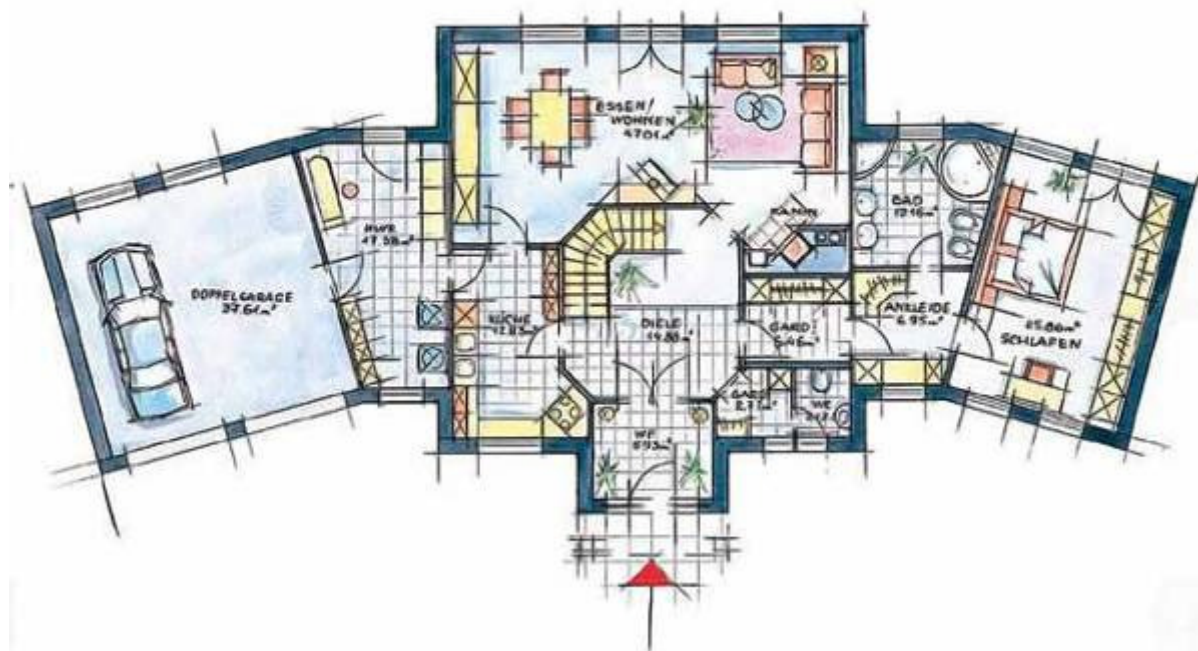
May we invite you to this first class residence – your new home.

What a feast for the eyes fulfilling all of your requirements . The Mediterranean Style with its classic elements are a special feature which makes an impressive statement about you!

The imposing columns and windows enhance the sunny visual effect. A look at the outside will have you longing to take a glance at the stylish inside.

The great living- and dining area offers plenty of space and represents the perfect setting for gala receptions as well as private parties. But even more than that you will enjoy peaceful hours in front of the romantic chimney.

The first floor has two guest rooms with walk in closets and separate bathrooms. Alternatively they could be used as an office, a child's or even grandchild's room. The two balconies offer you the perfect viewing points and add to your holiday feeling. Perfect make yourself at home!





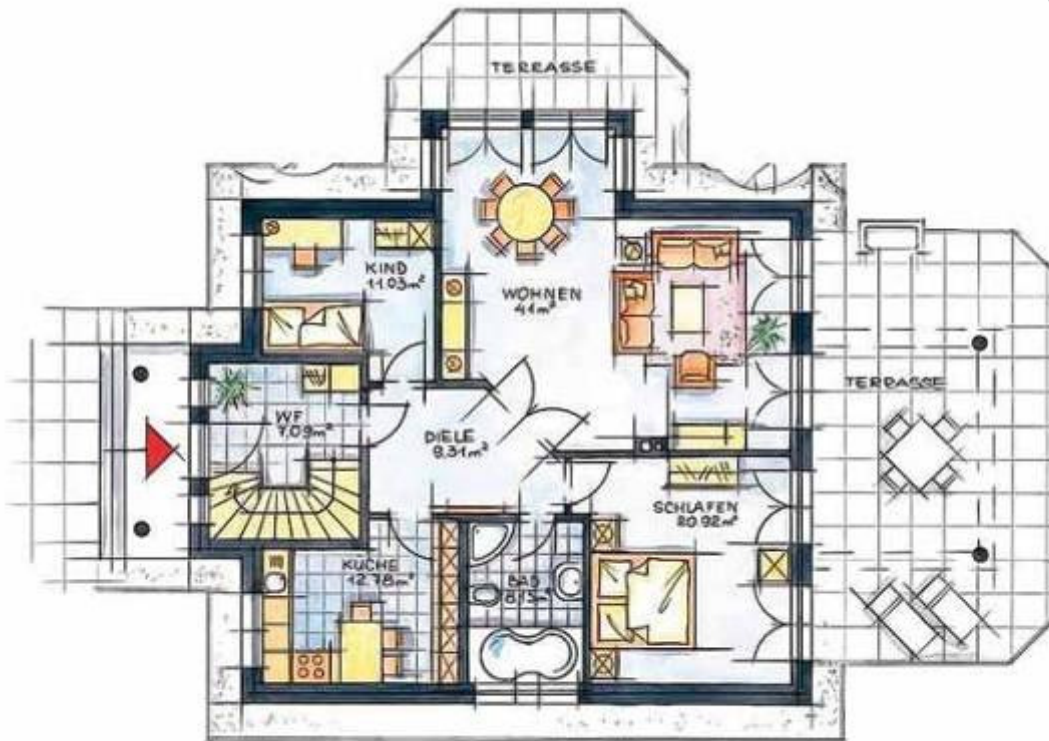
Modern exclusivity – Do you prefer a higher standard of living, especially when it comes to your own four walls?

This mansion will appeal to you with its modern architecture right down to the last detail. For example the elegant entrance with the huge roofing supported by solid posts already speaks highly about the occupants! And this luxurious experience continues on the inside.

Would you like to take your meals or drinks alfresco? The two terraces could be the highlight of your day – The first to the south. The second to the west ensures sunset views - Enjoyed from within your own home!

The separated floors are multi-purpose and could be used for many things - a granny flat perhaps? The choice is yours!

The child's room could easily be turned into a guest's room, or perhaps you prefer an office to work from home from?







Living the comfortable way.

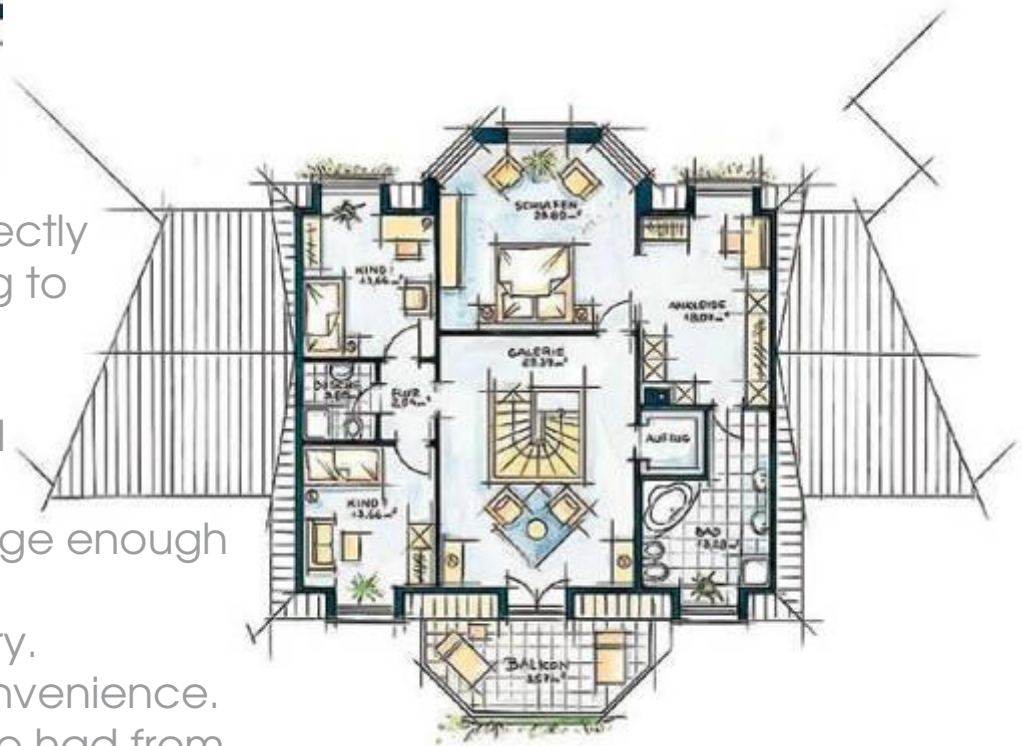
The pleasing conception of this residence fits perfectly into any charming neighbourhood. Corresponding to nature itself this "PALAIS exclusive" offers a superb wings.

This comfortable living is emphasised by each and every detail. A spacious fitness and wellness area is available. This residence includes a garage - Large enough to house four cars with an adjoining utility room.

A staircase connects the hall with the upper gallery.

We have even integrated an elevator for your convenience.

A very special detail is the twin views which can be had from the master bedroom with its projecting alcoves.



The ExklusivHaus

Don't let your dreams get wet –
join us underground!



A waterproof decision:
the floating basement
was given the leak
test, and emerges the
winner!



Whether cellar or foundation record:
Build on quality and security!



The ExklusivHaus





The ExklusivHaus

Made in Germany



Quality through and through with nature's No 1 building material - Wood!
Energy efficiency that guarantees a healthy future.

- * Controlled ventilating system with heat recovery
- * Thermal transforming of air- and earth temperature into heating
- * Acoustic decoupling of walls and ceiling plus vibration free construction



Exklusiv Haus

The full package!

Humidity transporting full wood wall system
Guaranteed comfortable living!

400 mm strong with an htc of 0.145 W/m²K
* brick cladding is possible

Full wood ceiling separating the floors
* the ideal sound protection

A clearance height of 270 cm
* generous use of space

Electric aluminium shutters
*F or variations of light and shade
to suit your mood.

Outside lighting with motion detector
Combining security and functionality

Clay roofing shingle
* function and aesthetics for generations

Elegant tiles of your choice - a bathroom
reflecting your taste - Your sense of exclusivity

Windows with **3 layer insulation glazing**
htc 0,7 W/m²K
* logical supplement for a low energy home

Sophisticated sanitary equipment
* fitting with the elegant tiles

Established domestic engineering
* proven and well known technology

Unlimited electric plugs
* preventing cable tangle

Electric clearance of sleeping areas
* No magnetic fields gives you a restful sleep

The **full wood wall system** able to achieve
Zero Carbon
* choose your own running costs?

F90-achievement
* perfect fire prevention for your ExklusivHaus

Don't let your dream get wet!
* Join us underground - **The ExklusivHaus
basement**

We are proud to offer a **40 years warranty**
for the complete construction!



EXKLUSIV [®] WOHNKULTUR
der Extraklasse
Haus



Exklusiv Haus AG
Oberer Westring 14
D 33142 Büren

Tel +49 2951 975 4199 · Fax +49 2951 975 3010
office@eh-ag.de
www.exklusivhaus-ag.de